

Datum afgifte

13-9-2022



ERP Code

12104610

Ingrediënten

	Percentage
gepasteuriseerde melk	96.3 %
zetmeel	2 %
zout	1.2 %
zuursel	<1 %
microbieel stremsel	<1 %

Ingrediëntendeclaratie

gepasteuriseerde MELK, zetmeel, zout, zuursel, microbieel stremsel.

Voedingswaarde

	100 g
Energie (kJ)	1545 kJ
Energie (kcal)	370 kcal
Eiwit	27.4 g
Koolhydraten	1.6 g
- Suikers	0 g
Vetten	28.4 g
- Verzadigd vet	19.6 g
Voedingsvezels	0 g
Vocht	38.1 %
Zout	1.2 g
pH	5.7

Datum afgifte 13-9-2022



Allergenen Informatie

Gluten	-
Schaaldieren	-
Ei	-
Vis	-
Aardnoten (pinda's)	-
Soja	-
Melk	+
Noten	-
Selderij	-
Mosterd	-
Sesam	-
Zwaveloxide en sulfieten (E220-E228)	-
Lupine	-
Weekdieren	-

Datum afgifte 13-9-2022

Microbiologische eigenschappen

Enterobacteriaceae	<1000	Kve/g
E.coli	<100	Kve/g
Coag.pos.Staphylococcen	<100	Kve/g
Gisten/Schimmels	<100000 / <5000	Kve/g
Listeria monocytogenes	neg.	/25g
Salmonella	neg.	/25g

Notities

Product en proces

Proces	Kaas conditioneren, snijden, raspen, onder beschermende atmosfeer verpakken en etiketteren, koel opslaan.
Vorm	3.0 mm
Gewicht	10 x 1 kilo
Beschermende atmosfeer	CO2 / N2 (O2 < 3% tijdens verwerking).

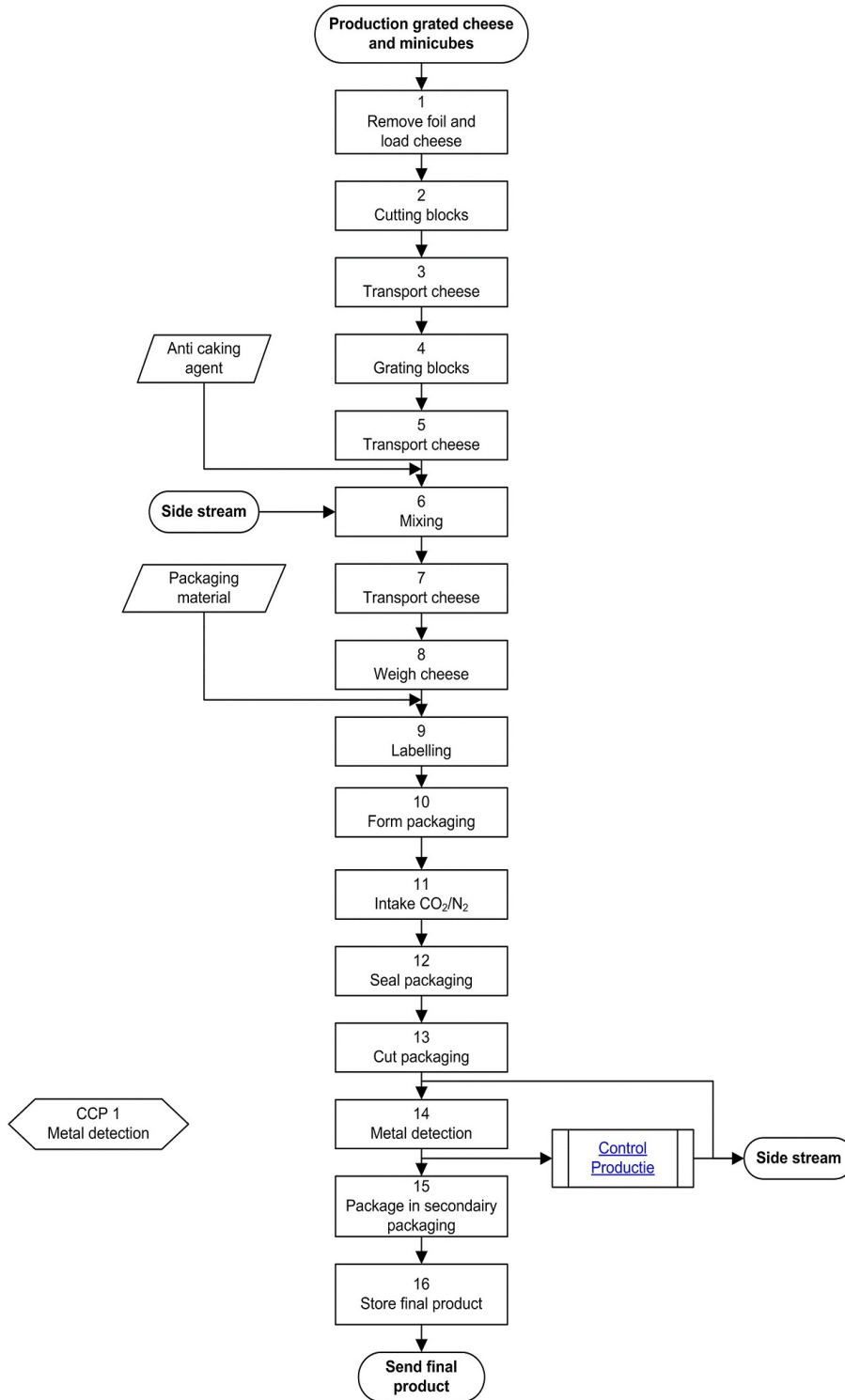
Overige informatie

GMO status	Product is GMO vrij conform Europese wetgeving 1829/2003 en 1830/2003.
Houdbaarheid/opslag	10 weken bij maximaal 7 °C.

Authorisatie

Naam	Ikbel Ben Amor
Afdeling	Q.A.

Flowdiagram



Datum afgifte

13-9-2022

Statements

Gluten

Hereby we guaranty that our products are gluten-free conform Commission Regulation (EC) No 828/2014.

Radiation


No raw materials or products of Vepo Cheese have been exposed to radiation with the intent to preserve them.

Primary packaging material

Primary packaging material is plastic. We hereby declare that our primary packaging material is in conformity with:

- European Regulation (EC) no. 1935/2004
- European Regulation no. 10/2011 of 14 January 2011 and amendments
- Regulation (EC) no. 2023/2006 on good manufacturing practice for materials and articles intended to come into contact with food

Bodegraven, 24.05.2022



Vepo Cheese
PO Box 10
2410 AA BODEGRAVEN
THE NETHERLANDS

Ing. K.Kruyswijk
QA Specialist
Vepo Cheese

Vepo Cheese, location Bodegraven

EC approval:



Quality certificates:



Vepo Cheese, location Oudewater

EC approval:



Quality certificates:



Download certificates at www.vepocheese.com